

## **Padelbaner Faaborg rev3**

Kontaktperson:  
Ordre-nr.:  
eco2LIGHT A/S:  
Kunde-nr.:

Date: 29.03.2022  
Operator:

Operator  
Telephone  
Fax  
e-Mail

## Table of contents

<b>Padelbaner Faaborg rev3</b>	
Project Cover	1
Table of contents	2
<b>Exterior Scene 1</b>	
Planning data	3
Luminaire parts list	4
Pole Positions (Coordinates List)	5
Pole Luminaires (Summary)	7
Sport Luminaires (Coordinates List)	15
GR Observer (Results Overview)	17
3D Rendering	20
<b>Exterior Surfaces</b>	
<b>Kalekovænget 32</b>	
Isolines (E, Vertical)	21
<b>Ved stadion kantine</b>	
Isolines (E, Vertical)	22
<b>General Sport Area 1 Calculation Grid (TA)</b>	
Summary	23
Isolines (E, Horizontal)	24
Greyscale (E, Horizontal)	25
<b>General Sport Area 1 Calculation Grid (TA)</b>	
Summary	26
Isolines (E, Horizontal)	27
Greyscale (E, Horizontal)	28
<b>Luminous intensity calculation points</b>	
<b>Ved stadion kantine</b>	
Summary	29
<b>Kalekovænget 32</b>	
Summary	31

Operator  
 Telephone  
 Fax  
 e-Mail

### Exterior Scene 1 / Planning data



Light loss factor: 0.80, ULR (Upward Light Ratio): 2.0%

Scale 1:757

#### Luminaire Parts List

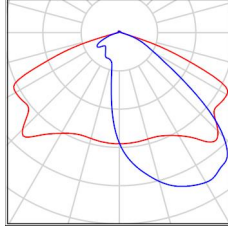
No.	Pieces	Designation (Correction Factor)	Φ (Luminaire) [lm]	Φ (Lamps) [lm]	P [W]
1	8	LED HIGH MAST HM150NE1G-CM TP3 (1.000)	17046	17500	150.5
2	8	LED HIGH MAST HM150NE1G-CM TP4 (1.000)	17254	17500	150.9
<b>Total:</b>			<b>274405</b>	<b>280000</b>	<b>2411.2</b>

Operator  
 Telephone  
 Fax  
 e-Mail

### Exterior Scene 1 / Luminaire parts list

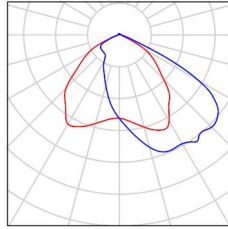
8 Pieces    LED HIGH MAST HM150NE1G-CM TP3  
 Article No.: LED HIGH MAST  
 Luminous flux (Luminaire): 17046 lm  
 Luminous flux (Lamps): 17500 lm  
 Luminaire Wattage: 150.5 W  
 Luminaire classification according to CIE: 98  
 CIE flux code: 45 85 98 98 98  
 Fitting: 1 x User defined (Correction Factor 1.000).

See our luminaire catalog  
 for an image of the  
 luminaire.



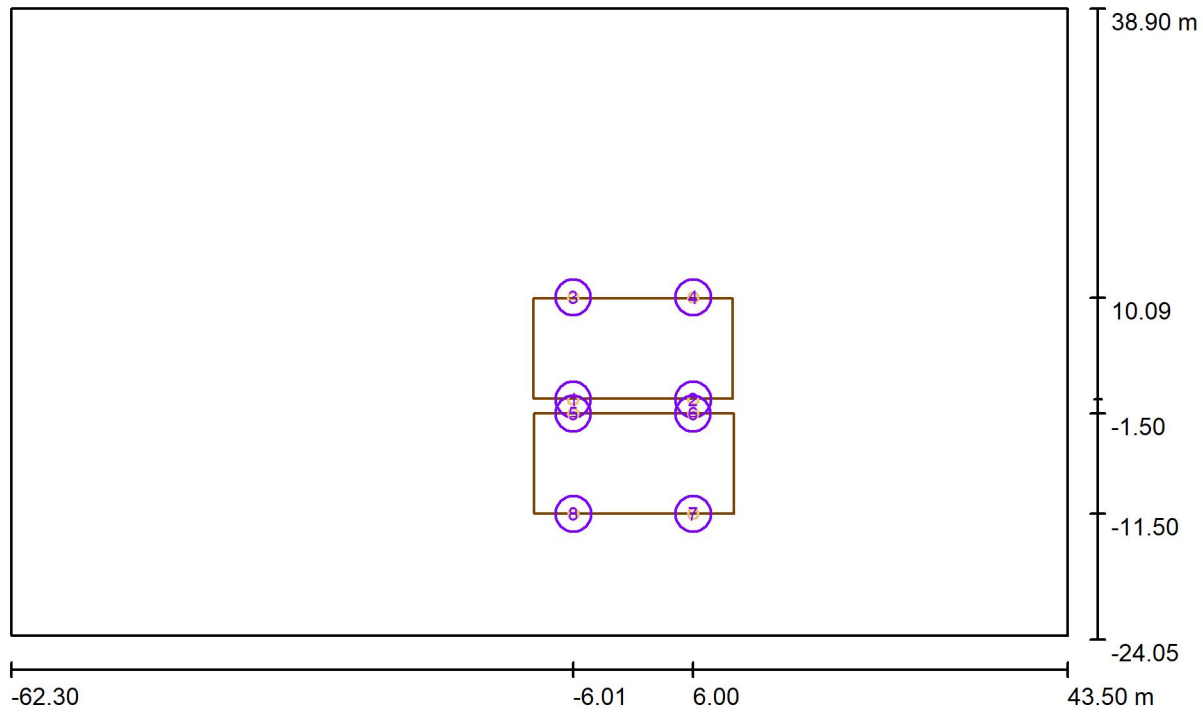
8 Pieces    LED HIGH MAST HM150NE1G-CM TP4  
 Article No.: LED HIGH MAST  
 Luminous flux (Luminaire): 17254 lm  
 Luminous flux (Lamps): 17500 lm  
 Luminaire Wattage: 150.9 W  
 Luminaire classification according to CIE: 98  
 CIE flux code: 47 83 98 98 98  
 Fitting: 1 x User defined (Correction Factor 1.000).

See our luminaire catalog  
 for an image of the  
 luminaire.



Operator  
 Telephone  
 Fax  
 e-Mail

### Exterior Scene 1 / Pole Positions (Coordinates List)



Scale 1 : 757

#### List of the Pole Positions

No.	Designation	Position [m]		
		X	Y	Z
1	Pole Position 1	-6.007	-0.090	0.000
2	Pole Position 2	6.007	-0.090	0.000
3	Pole Position 3	-6.007	10.091	0.000
4	Pole Position 4	6.007	10.091	0.000

Operator  
Telephone  
Fax  
e-Mail

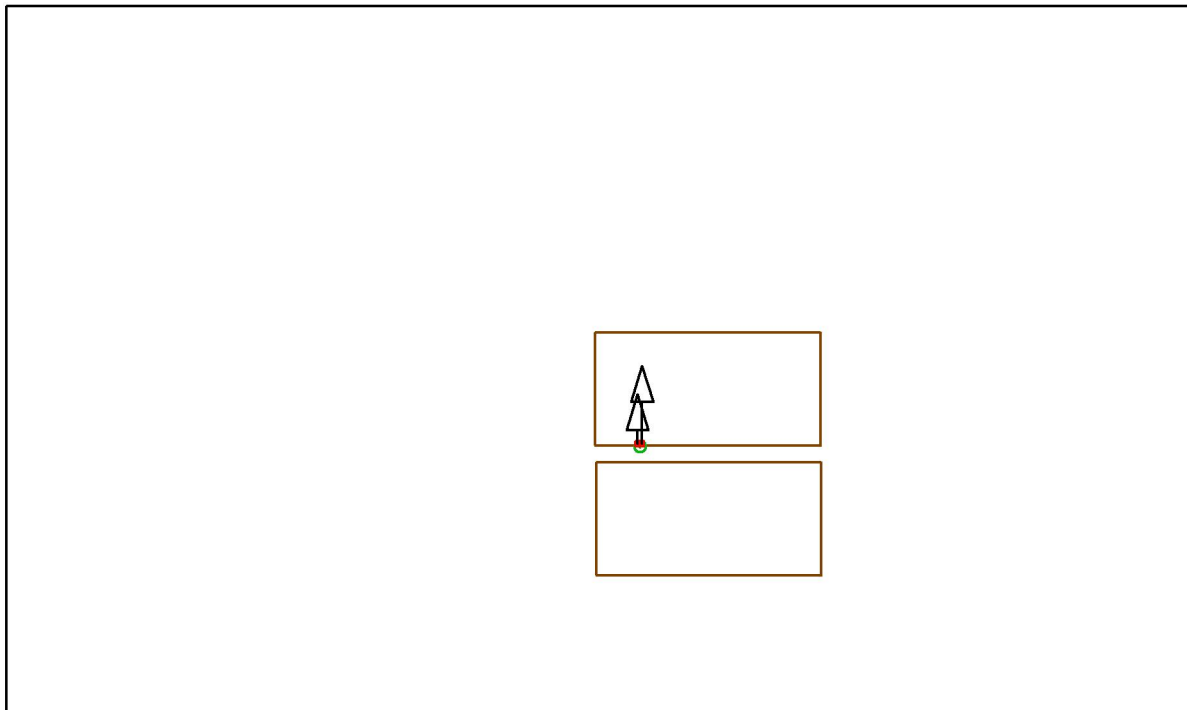
## Exterior Scene 1 / Pole Positions (Coordinates List)

### List of the Pole Positions

No.	Designation	Position [m]		
		X	Y	Z
5	Pole Position 5	-6.000	-1.500	0.000
6	Pole Position 6	6.000	-1.500	0.000
7	Pole Position 7	6.016	-11.500	0.000
8	Pole Position 8	-5.980	-11.500	0.000

Operator  
 Telephone  
 Fax  
 e-Mail

### Exterior Scene 1 / Pole Luminaires (Summary)

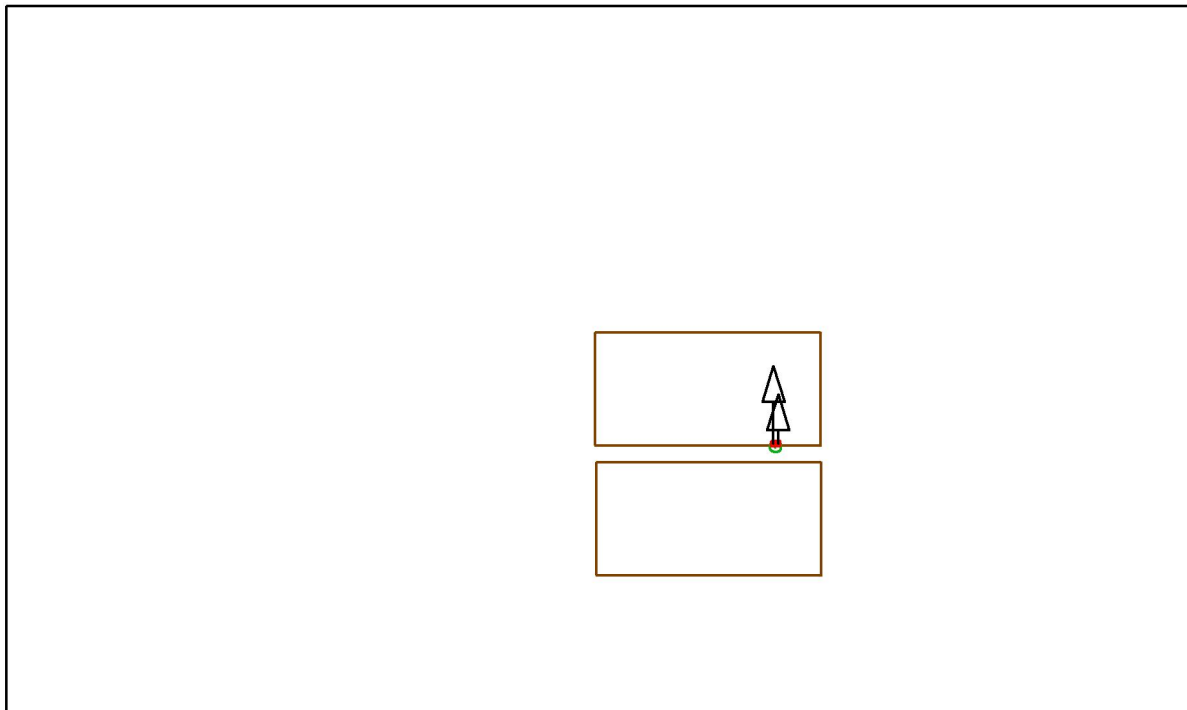


Position: (-6.007 m, -0.090 m, 0.000 m)

No.	Luminaire	Aiming Point [m]			Angle [°]	Alignment
		X	Y	Z		
1	LED HIGH MAST HM150NE1G-CM TP4	-6.270	4.523	0.000	53.9	(C 90, G IMax)
2	LED HIGH MAST HM150NE1G-CM TP3	-5.832	7.023	0.000	41.2	(C 90, G IMax)

Operator  
 Telephone  
 Fax  
 e-Mail

### Exterior Scene 1 / Pole Luminaires (Summary)



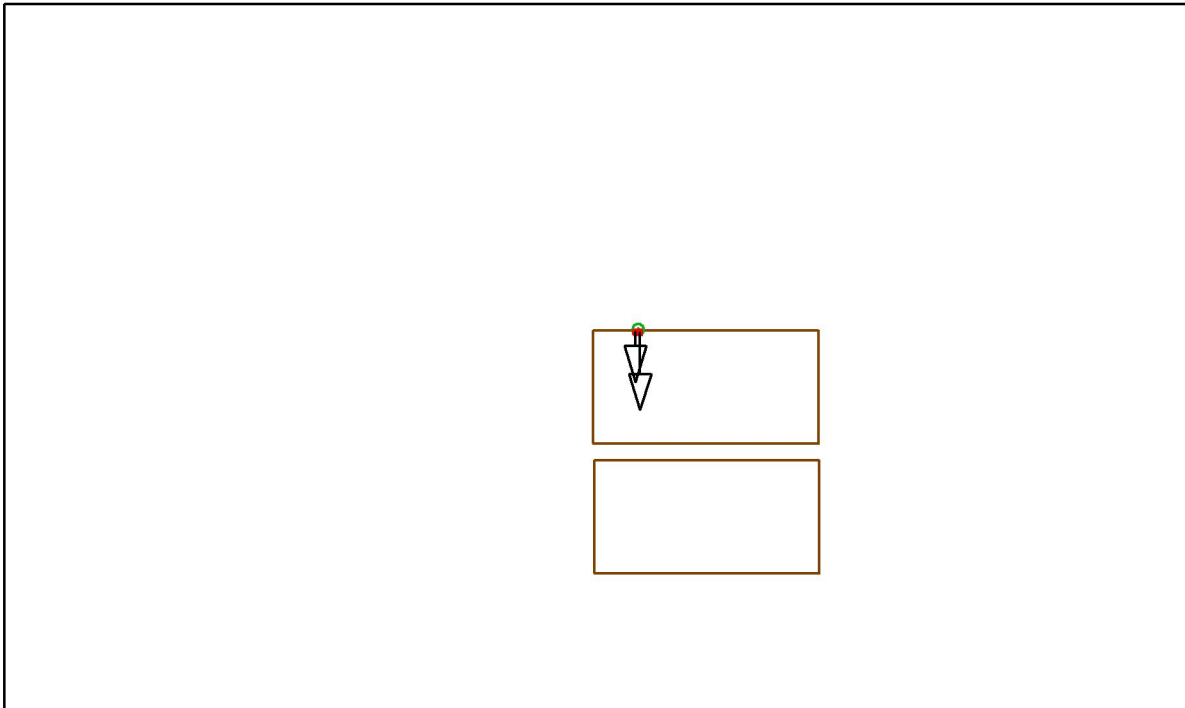
Position: (6.007 m, -0.090 m, 0.000 m)

No.	Luminaire	Aiming Point [m]			Angle [°]	Alignment
		X	Y	Z		
1	LED HIGH MAST HM150NE1G-CM TP4	6.270	4.523	0.000	53.9	(C 90, G IMax)
2	LED HIGH MAST HM150NE1G-CM TP3	5.832	7.023	0.000	41.2	(C 90, G IMax)



Operator  
 Telephone  
 Fax  
 e-Mail

### Exterior Scene 1 / Pole Luminaires (Summary)

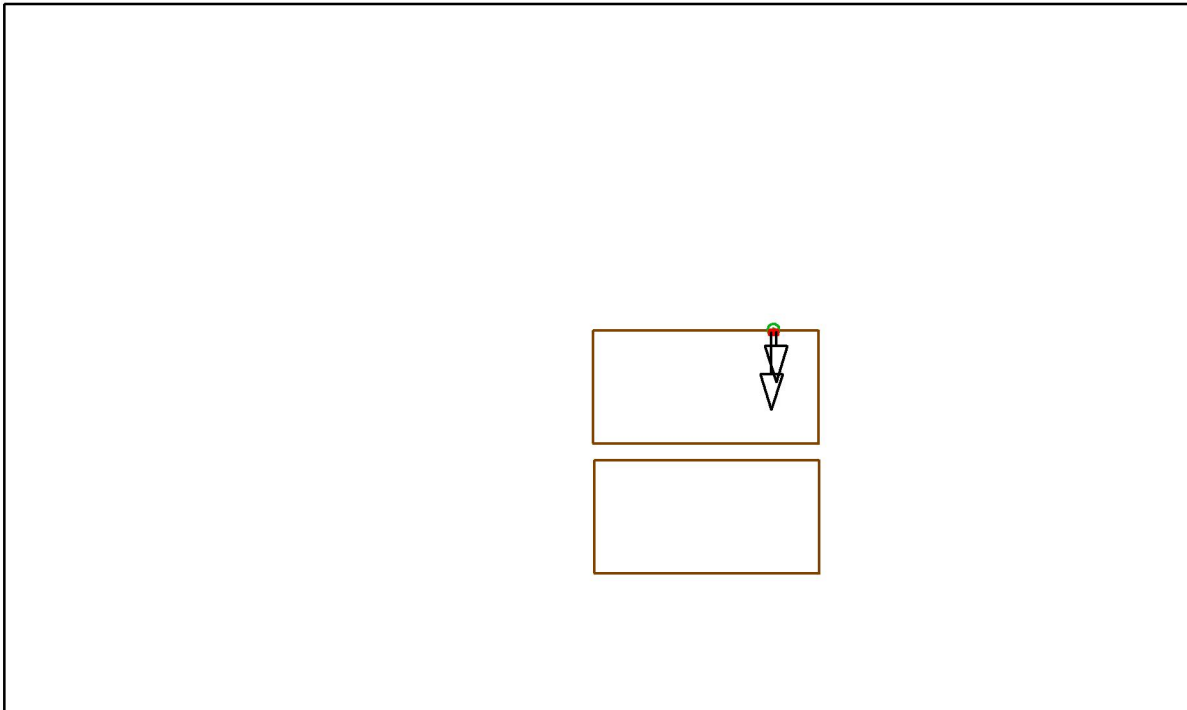


Position: (-6.007 m, 10.091 m, 0.000 m)

No.	Luminaire	Aiming Point [m]			Angle [°]	Alignment
		X	Y	Z		
1	LED HIGH MAST HM150NE1G-CM TP4	-6.270	5.478	0.000	53.9	(C 90, G IMax)
2	LED HIGH MAST HM150NE1G-CM TP3	-5.832	2.978	0.000	41.2	(C 90, G IMax)

Operator  
 Telephone  
 Fax  
 e-Mail

### Exterior Scene 1 / Pole Luminaires (Summary)

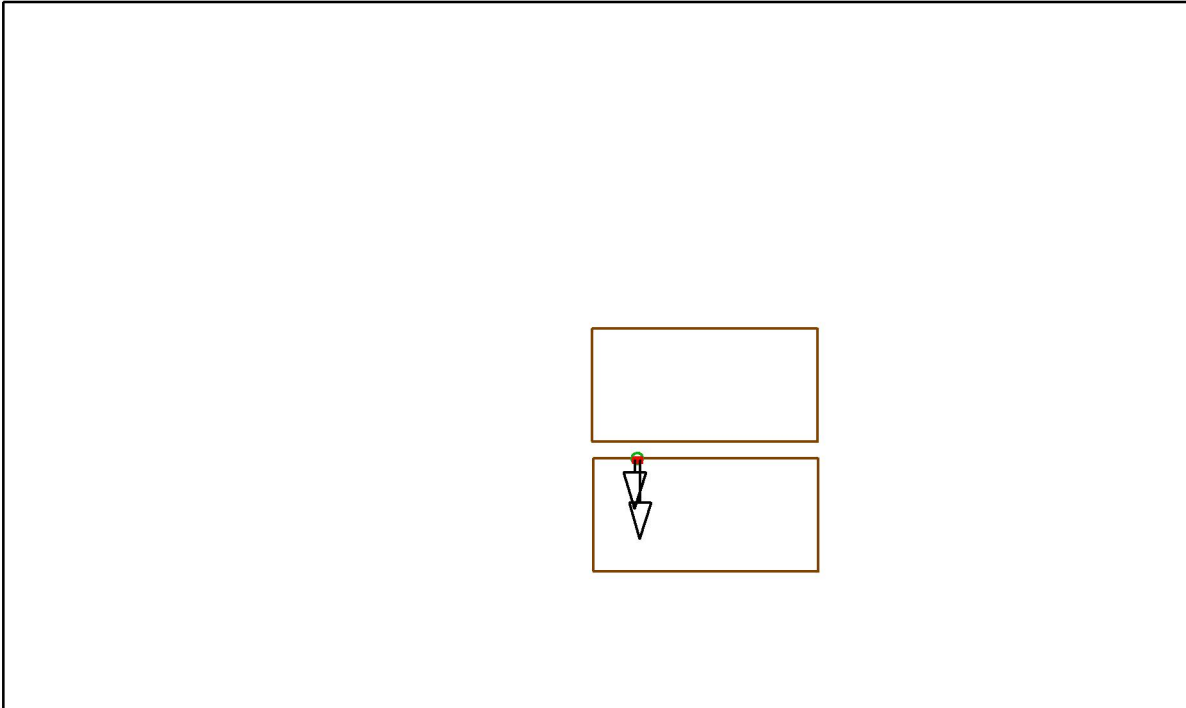


Position: (6.007 m, 10.091 m, 0.000 m)

No.	Luminaire	Aiming Point [m]			Angle [°]	Alignment
		X	Y	Z		
1	LED HIGH MAST HM150NE1G-CM TP4	6.270	5.478	0.000	53.9	(C 90, G IMax)
2	LED HIGH MAST HM150NE1G-CM TP3	5.832	2.978	0.000	41.2	(C 90, G IMax)

Operator  
 Telephone  
 Fax  
 e-Mail

### Exterior Scene 1 / Pole Luminaires (Summary)

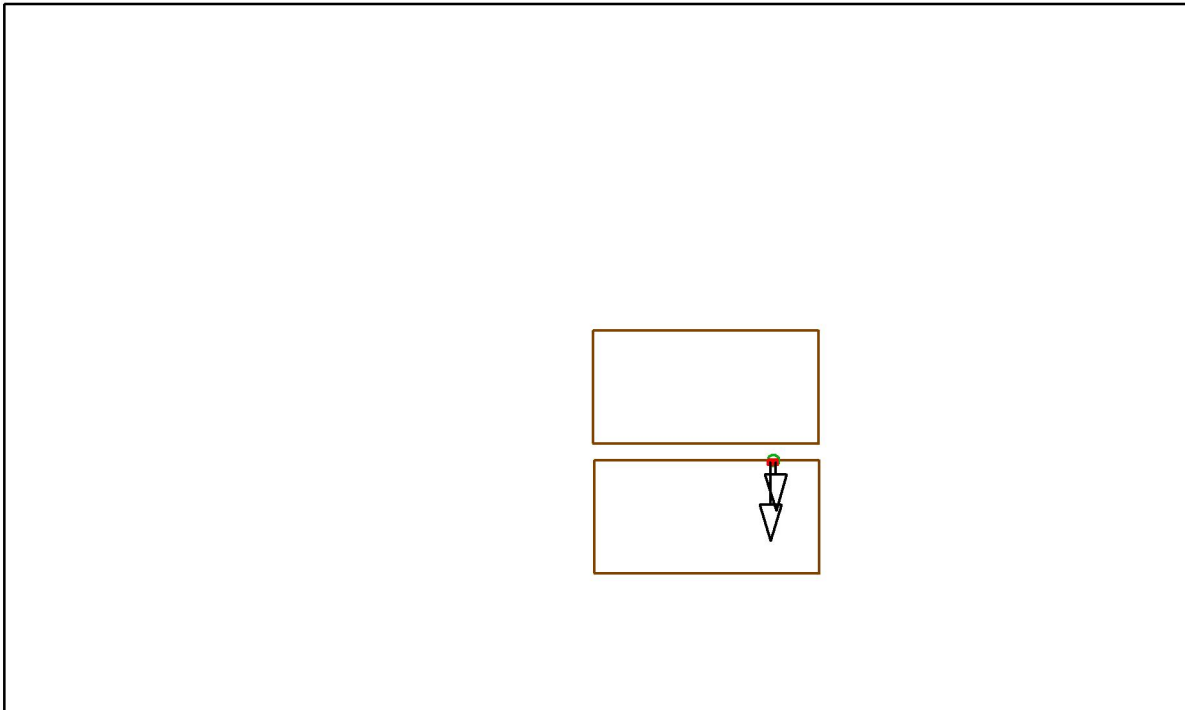


Position: (-6.000 m, -1.500 m, 0.000 m)

No.	Luminaire	Aiming Point [m]			Angle [°]	Alignment
		X	Y	Z		
1	LED HIGH MAST HM150NE1G-CM TP4	-6.238	-5.910	0.000	54.6	(C 90, G IMax)
2	LED HIGH MAST HM150NE1G-CM TP3	-5.761	-8.579	0.000	40.9	(C 90, G IMax)

Operator  
 Telephone  
 Fax  
 e-Mail

### Exterior Scene 1 / Pole Luminaires (Summary)

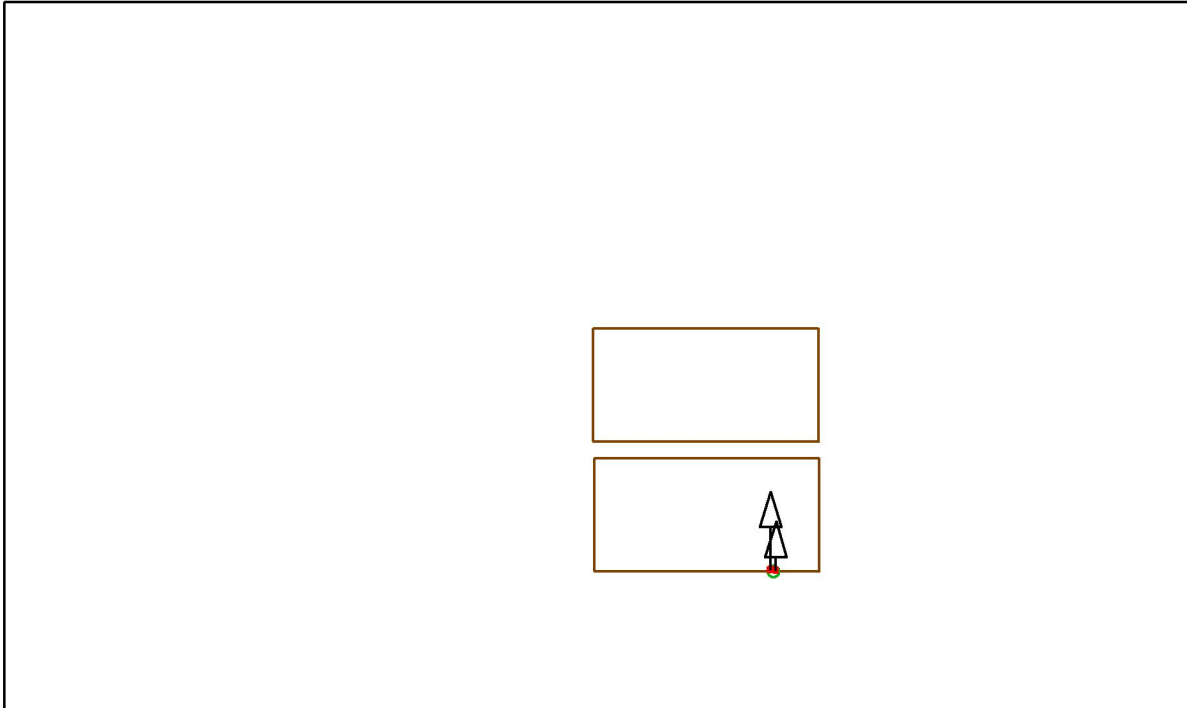


Position: (6.000 m, -1.500 m, 0.000 m)

No.	Luminaire	Aiming Point [m]			Angle [°]	Alignment
		X	Y	Z		
1	LED HIGH MAST HM150NE1G-CM TP4	6.238	-5.910	0.000	54.6	(C 90, G IMax)
2	LED HIGH MAST HM150NE1G-CM TP3	5.761	-8.579	0.000	40.9	(C 90, G IMax)

Operator  
 Telephone  
 Fax  
 e-Mail

### Exterior Scene 1 / Pole Luminaires (Summary)

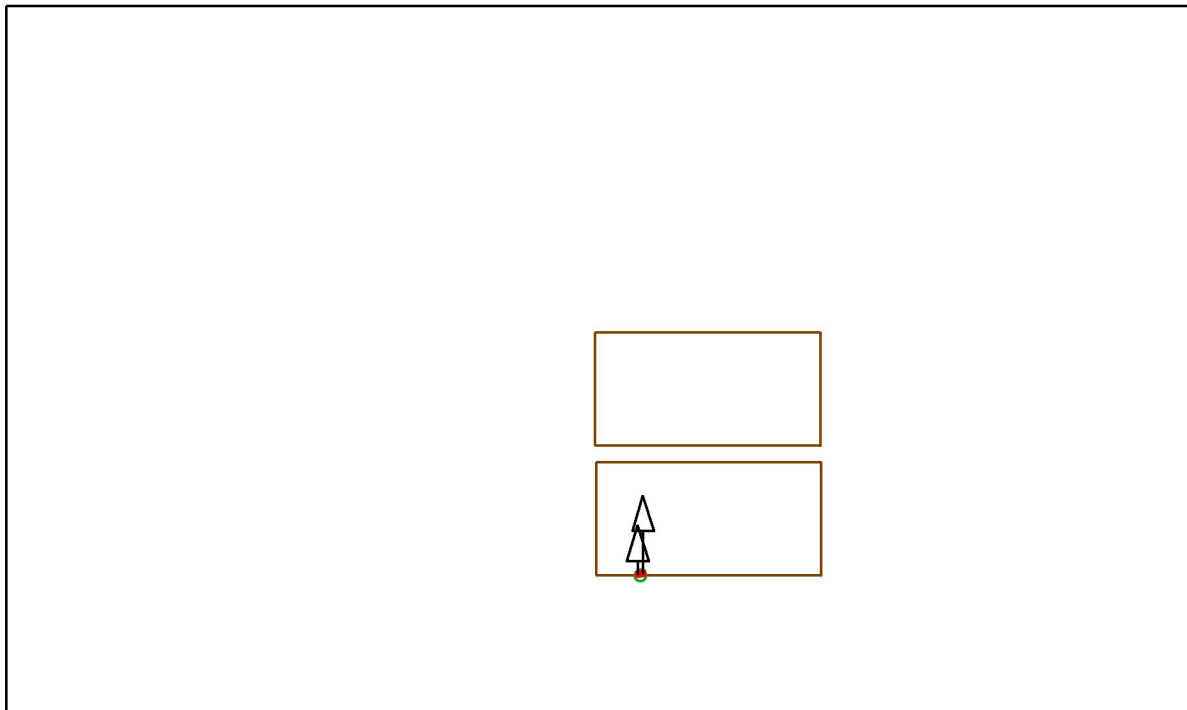


Position: (6.016 m, -11.500 m, 0.000 m)

No.	Luminaire	Aiming Point [m]			Angle [°]	Alignment
		X	Y	Z		
1	LED HIGH MAST HM150NE1G-CM TP4	6.238	-7.090	0.000	54.6	(C 90, G IMax)
2	LED HIGH MAST HM150NE1G-CM TP3	5.761	-4.421	0.000	40.9	(C 90, G IMax)

Operator  
 Telephone  
 Fax  
 e-Mail

### Exterior Scene 1 / Pole Luminaires (Summary)

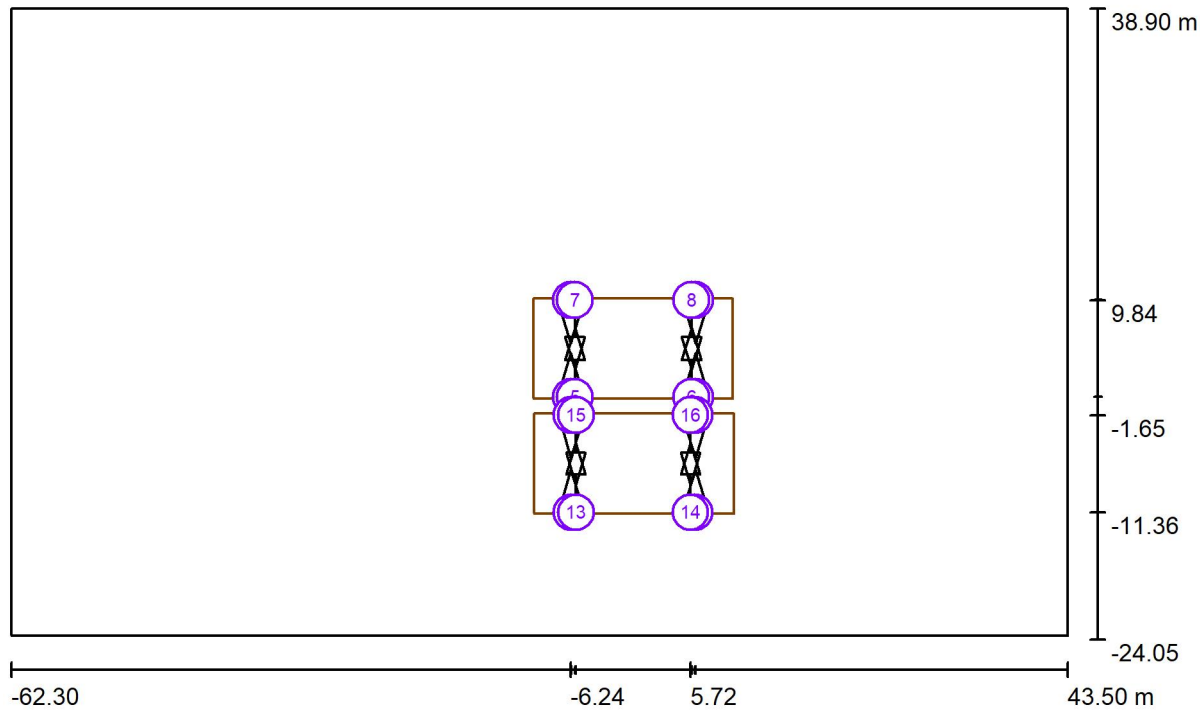


Position: (-5.980 m, -11.500 m, 0.000 m)

No.	Luminaire	Aiming Point [m]			Angle [°]	Alignment
		X	Y	Z		
1	LED HIGH MAST HM150NE1G-CM TP4	-6.238	-7.090	0.000	54.6	(C 90, G IMax)
2	LED HIGH MAST HM150NE1G-CM TP3	-5.761	-4.421	0.000	40.9	(C 90, G IMax)

Operator  
Telephone  
Fax  
e-Mail

### Exterior Scene 1 / Sport Luminaires (Coordinates List)



Scale 1 : 757

#### List of the Sport Luminaires

Luminaire	Index	Position [m]			Aiming Point [m]			Angle [°]	Alignment	Pole
		X	Y	Z	X	Y	Z			
LED HIGH MAST HM150NE1G-CM TP4	1	-6.237	0.153	6.000	-6.270	4.523	0.000	53.9	(C 90, G IMax)	Pole Position 1
LED HIGH MAST HM150NE1G-CM TP4	2	6.237	0.153	6.000	6.270	4.523	0.000	53.9	(C 90, G IMax)	Pole Position 2
LED HIGH MAST HM150NE1G-CM TP4	3	-6.237	9.848	6.000	-6.270	5.478	0.000	53.9	(C 90, G IMax)	Pole Position 3
LED HIGH MAST HM150NE1G-CM TP4	4	6.237	9.848	6.000	6.270	5.478	0.000	53.9	(C 90, G IMax)	Pole Position 4

Operator  
Telephone  
Fax  
e-Mail

## Exterior Scene 1 / Sport Luminaires (Coordinates List)

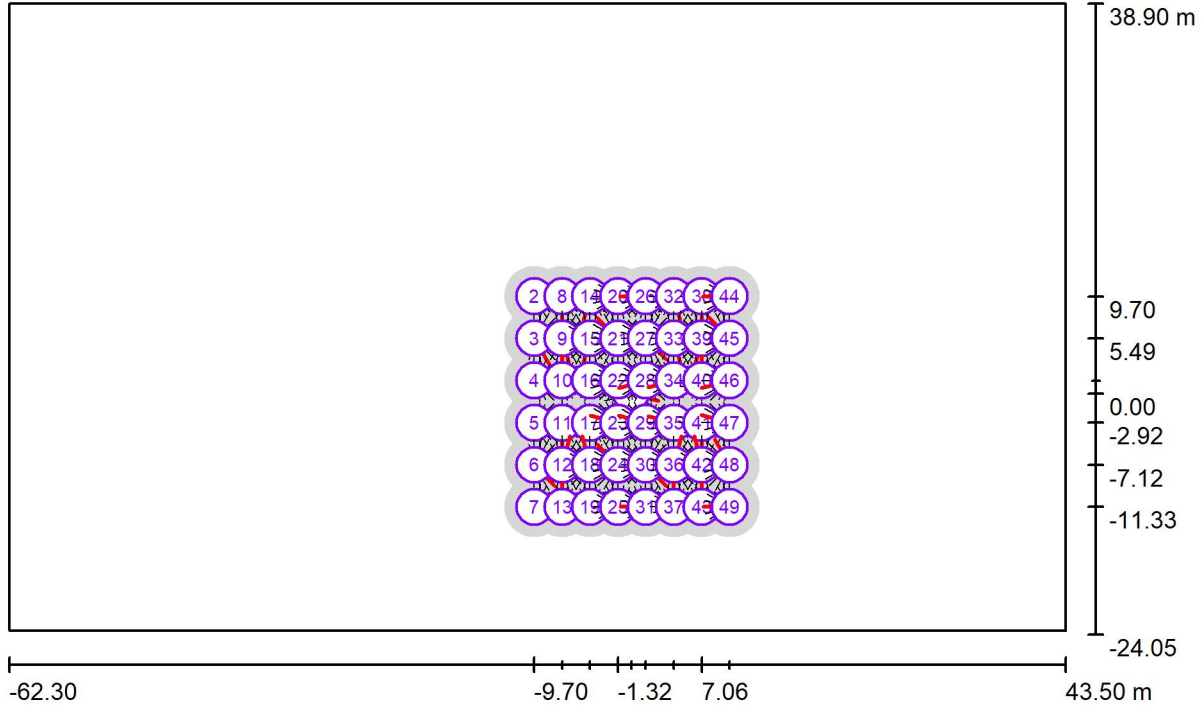
### List of the Sport Luminaires

Luminaire	Index	Position [m]			Aiming Point [m]			Angle [°]	Alignment	Pole
		X	Y	Z	X	Y	Z			
LED HIGH MAST HM150NE1G-CM TP3	5	-5.832	0.161	6.000	-5.832	7.023	0.000	41.2	(C 90, G IMax)	Pole Position 1
LED HIGH MAST HM150NE1G-CM TP3	6	5.832	0.161	6.000	5.832	7.023	0.000	41.2	(C 90, G IMax)	Pole Position 2
LED HIGH MAST HM150NE1G-CM TP3	7	-5.832	9.840	6.000	-5.832	2.978	0.000	41.2	(C 90, G IMax)	Pole Position 3
LED HIGH MAST HM150NE1G-CM TP3	8	5.832	9.840	6.000	5.832	2.978	0.000	41.2	(C 90, G IMax)	Pole Position 4
LED HIGH MAST HM150NE1G-CM TP4	9	-6.198	-11.356	6.000	-6.238	-7.090	0.000	54.6	(C 90, G IMax)	Pole Position 8
LED HIGH MAST HM150NE1G-CM TP4	10	6.198	-11.356	6.000	6.238	-7.090	0.000	54.6	(C 90, G IMax)	Pole Position 7
LED HIGH MAST HM150NE1G-CM TP4	11	-6.198	-1.644	6.000	-6.238	-5.910	0.000	54.6	(C 90, G IMax)	Pole Position 5
LED HIGH MAST HM150NE1G-CM TP4	12	6.198	-1.644	6.000	6.238	-5.910	0.000	54.6	(C 90, G IMax)	Pole Position 6
LED HIGH MAST HM150NE1G-CM TP3	13	-5.724	-11.354	6.000	-5.761	-4.421	0.000	40.9	(C 90, G IMax)	Pole Position 8
LED HIGH MAST HM150NE1G-CM TP3	14	5.724	-11.354	6.000	5.761	-4.421	0.000	40.9	(C 90, G IMax)	Pole Position 7
LED HIGH MAST HM150NE1G-CM TP3	15	-5.724	-1.646	6.000	-5.761	-8.579	0.000	40.9	(C 90, G IMax)	Pole Position 5
LED HIGH MAST HM150NE1G-CM TP3	16	5.724	-1.646	6.000	5.761	-8.579	0.000	40.9	(C 90, G IMax)	Pole Position 6



Operator  
 Telephone  
 Fax  
 e-Mail

### Exterior Scene 1 / GR Observer (Results Overview)



Scale 1 : 757

#### GR Observerlist

No.	Designation	Position [m]			Viewing sector [°]			Slope angle	Max
		X	Y	Z	Start	End	Increment		
1	GR Observer 1	0.000	0.000	1.500	0.0	360.0	15.0	-2.0	48 <sup>2)</sup>
2	GR Observer 2	-9.700	9.700	1.500	0.0	360.0	15.0	-2.0	45 <sup>2)</sup>
3	GR Observer 2	-9.700	5.495	1.500	0.0	360.0	15.0	-2.0	51 <sup>2)</sup>
4	GR Observer 2	-9.700	1.290	1.500	0.0	360.0	15.0	-2.0	49 <sup>2)</sup>

Operator  
Telephone  
Fax  
e-Mail

## Exterior Scene 1 / GR Observer (Results Overview)

### GR Observerlist

No.	Designation	Position [m]			Start	Viewing sector [°]		Slope angle	Max
		X	Y	Z		End	Increment		
5	GR Observer 2	-9.700	-2.915	1.500	0.0	360.0	15.0	-2.0	49 2)
6	GR Observer 2	-9.700	-7.120	1.500	0.0	360.0	15.0	-2.0	50 2)
7	GR Observer 2	-9.700	-11.325	1.500	0.0	360.0	15.0	-2.0	46 2)
8	GR Observer 2	-6.907	9.700	1.500	0.0	360.0	15.0	-2.0	42 2)
9	GR Observer 2	-6.907	5.495	1.500	0.0	360.0	15.0	-2.0	50 2)
10	GR Observer 2	-6.907	1.290	1.500	0.0	360.0	15.0	-2.0	41 2)
11	GR Observer 2	-6.907	-2.915	1.500	0.0	360.0	15.0	-2.0	41 2)
12	GR Observer 2	-6.907	-7.120	1.500	0.0	360.0	15.0	-2.0	50 2)
13	GR Observer 2	-6.907	-11.325	1.500	0.0	360.0	15.0	-2.0	40 2)
14	GR Observer 2	-4.114	9.700	1.500	0.0	360.0	15.0	-2.0	42 2)
15	GR Observer 2	-4.114	5.495	1.500	0.0	360.0	15.0	-2.0	51 2)
16	GR Observer 2	-4.114	1.290	1.500	0.0	360.0	15.0	-2.0	45 2)
17	GR Observer 2	-4.114	-2.915	1.500	0.0	360.0	15.0	-2.0	45 2)
18	GR Observer 2	-4.114	-7.120	1.500	0.0	360.0	15.0	-2.0	51 2)
19	GR Observer 2	-4.114	-11.325	1.500	0.0	360.0	15.0	-2.0	42 2)
20	GR Observer 2	-1.320	9.700	1.500	0.0	360.0	15.0	-2.0	44 2)
21	GR Observer 2	-1.320	5.495	1.500	0.0	360.0	15.0	-2.0	50 2)
22	GR Observer 2	-1.320	1.290	1.500	0.0	360.0	15.0	-2.0	48 2)
23	GR Observer 2	-1.320	-2.915	1.500	0.0	360.0	15.0	-2.0	48 2)
24	GR Observer 2	-1.320	-7.120	1.500	0.0	360.0	15.0	-2.0	50 2)
25	GR Observer 2	-1.320	-11.325	1.500	0.0	360.0	15.0	-2.0	44 2)
26	GR Observer 2	1.473	9.700	1.500	0.0	360.0	15.0	-2.0	44 2)
27	GR Observer 2	1.473	5.495	1.500	0.0	360.0	15.0	-2.0	50 2)
28	GR Observer 2	1.473	1.290	1.500	0.0	360.0	15.0	-2.0	48 2)
29	GR Observer 2	1.473	-2.915	1.500	0.0	360.0	15.0	-2.0	48 2)
30	GR Observer 2	1.473	-7.120	1.500	0.0	360.0	15.0	-2.0	50 2)
31	GR Observer 2	1.473	-11.325	1.500	0.0	360.0	15.0	-2.0	44 2)
32	GR Observer 2	4.266	9.700	1.500	0.0	360.0	15.0	-2.0	42 2)
33	GR Observer 2	4.266	5.495	1.500	0.0	360.0	15.0	-2.0	51 2)
34	GR Observer 2	4.266	1.290	1.500	0.0	360.0	15.0	-2.0	45 2)
35	GR Observer 2	4.266	-2.915	1.500	0.0	360.0	15.0	-2.0	45 2)
36	GR Observer 2	4.266	-7.120	1.500	0.0	360.0	15.0	-2.0	50 2)
37	GR Observer 2	4.266	-11.325	1.500	0.0	360.0	15.0	-2.0	41 2)
38	GR Observer 2	7.059	9.700	1.500	0.0	360.0	15.0	-2.0	41 2)
39	GR Observer 2	7.059	5.495	1.500	0.0	360.0	15.0	-2.0	50 2)
40	GR Observer 2	7.059	1.290	1.500	0.0	360.0	15.0	-2.0	41 2)

Operator  
 Telephone  
 Fax  
 e-Mail

## Exterior Scene 1 / GR Observer (Results Overview)

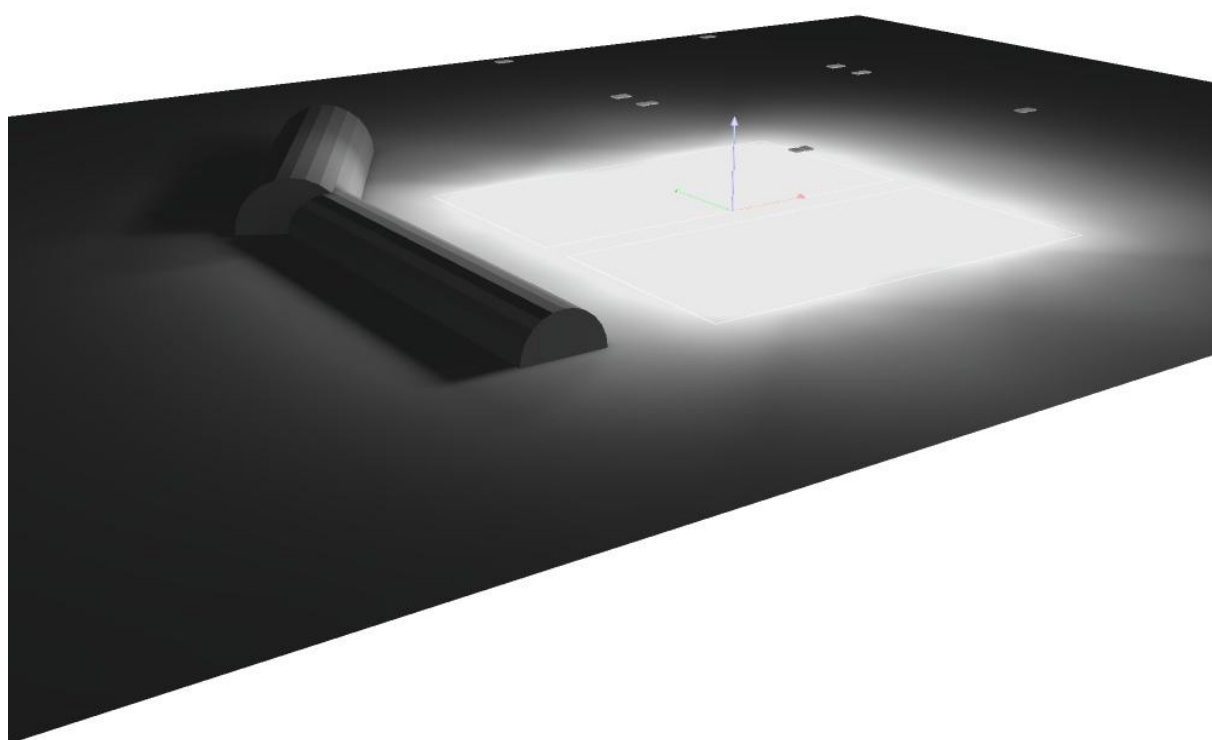
### GR Observerlist

No.	Designation	Position [m]			Start	Viewing sector [°]		Slope angle	Max
		X	Y	Z		End	Increment		
41	GR Observer 2	7.059	-2.915	1.500	0.0	360.0	15.0	-2.0	41 <sup>2)</sup>
42	GR Observer 2	7.059	-7.120	1.500	0.0	360.0	15.0	-2.0	50 <sup>2)</sup>
43	GR Observer 2	7.059	-11.325	1.500	0.0	360.0	15.0	-2.0	41 <sup>2)</sup>
44	GR Observer 2	9.852	9.700	1.500	0.0	360.0	15.0	-2.0	46 <sup>2)</sup>
45	GR Observer 2	9.852	5.495	1.500	0.0	360.0	15.0	-2.0	50 <sup>2)</sup>
46	GR Observer 2	9.852	1.290	1.500	0.0	360.0	15.0	-2.0	49 <sup>2)</sup>
47	GR Observer 2	9.852	-2.915	1.500	0.0	360.0	15.0	-2.0	49 <sup>2)</sup>
48	GR Observer 2	9.852	-7.120	1.500	0.0	360.0	15.0	-2.0	51 <sup>2)</sup>
49	GR Observer 2	9.852	-11.325	1.500	0.0	360.0	15.0	-2.0	45 <sup>2)</sup>

2) The calculated equivalent veil luminance of the environment is based on the assumption of a complete diffuse reflection behavior of the environment (acc. EN 12464-2).

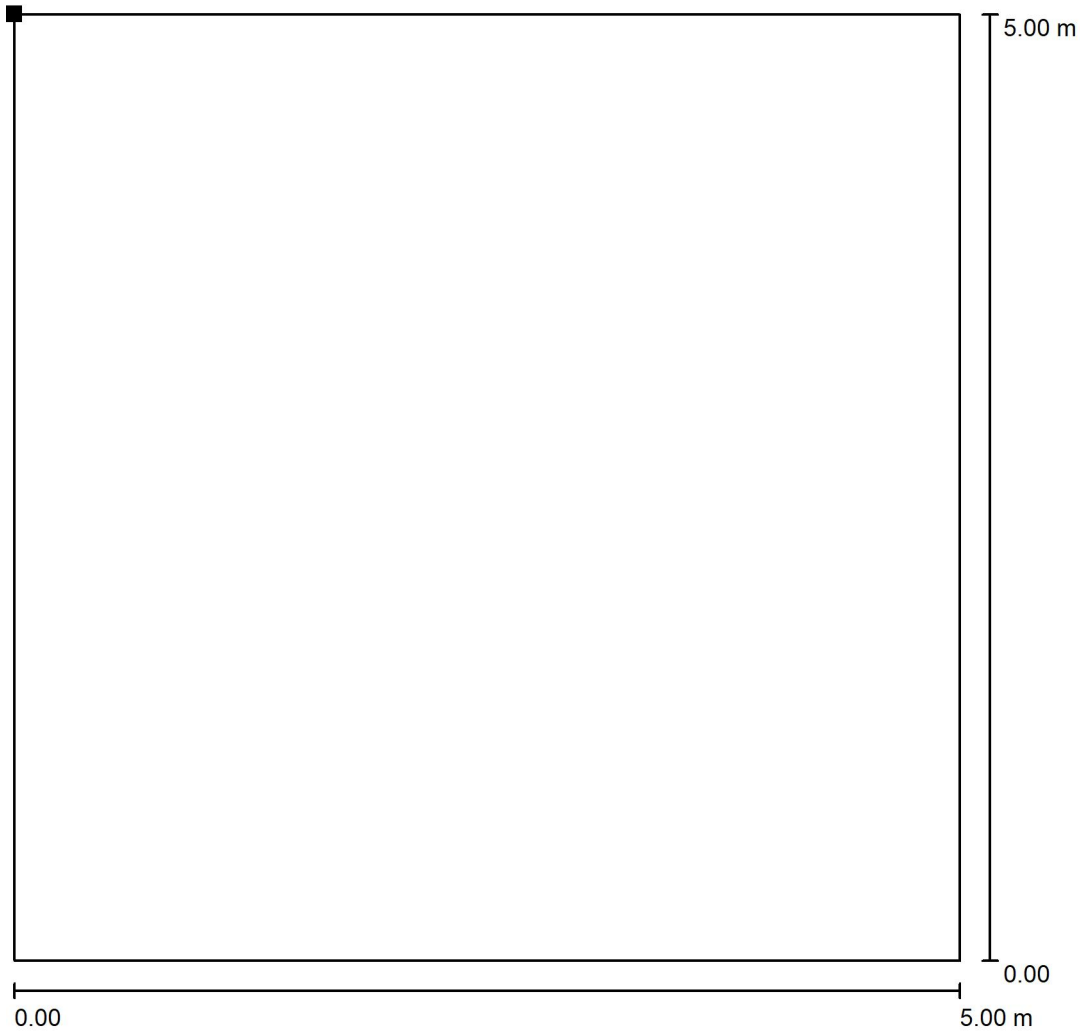
Operator  
Telephone  
Fax  
e-Mail

## Exterior Scene 1 / 3D Rendering



Operator  
 Telephone  
 Fax  
 e-Mail

**Exterior Scene 1 / Kalekovænget 32 / Isolines (E, Vertical)**



Values in Lux, Scale 1 : 40

Position of surface in external scene:  
 Marked point:  
 (-62.053 m, 27.072 m, 5.000 m)



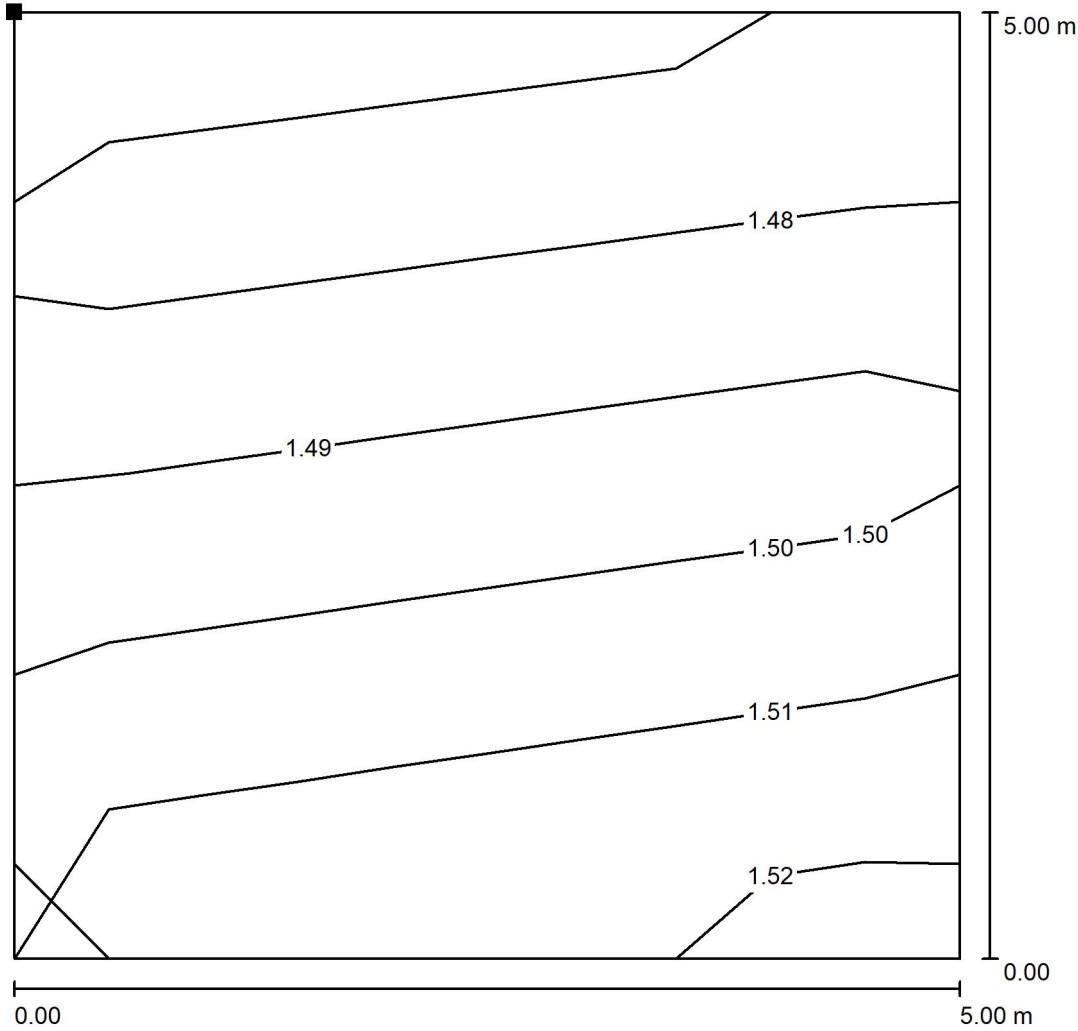
Grid: 1 x 1 Points

$E_{av}$ [lx]	$E_{min}$ [lx]	$E_{max}$ [lx]	u0	$E_{min} / E_{max}$
0.29	0.29	0.29	1.000	1.000

Rotation: 340.0°

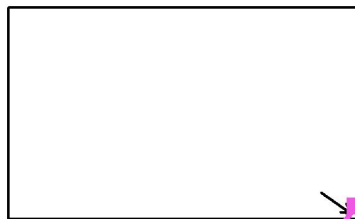
Operator  
 Telephone  
 Fax  
 e-Mail

**Exterior Scene 1 / Ved stadion kantine / Isolines (E, Vertical)**



Values in Lux, Scale 1 : 40

Position of surface in external scene:  
 Marked point:  
 (41.333 m, -19.953 m, 5.000 m)



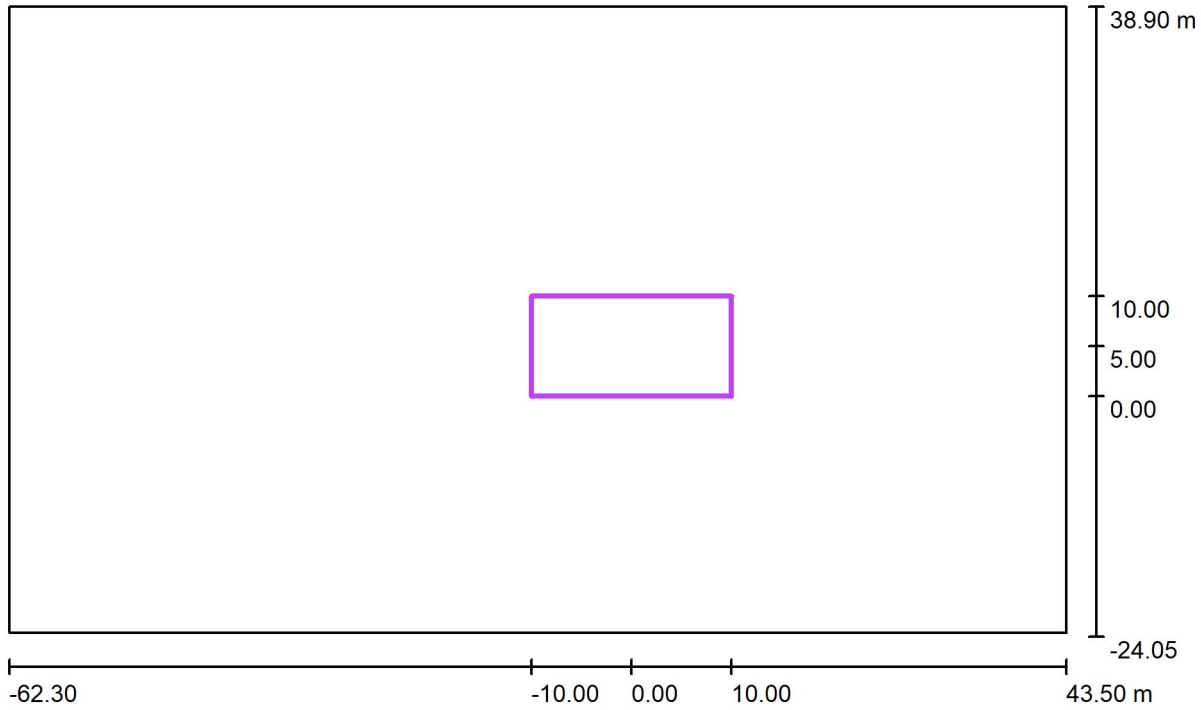
Grid: 2 x 2 Points

$E_{av}$ [lx]	$E_{min}$ [lx]	$E_{max}$ [lx]	u0	$E_{min} / E_{max}$
1.49	1.47	1.52	0.983	0.966

Rotation: 145.0°

Operator  
 Telephone  
 Fax  
 e-Mail

### Exterior Scene 1 / General Sport Area 1 Calculation Grid (TA) / Summary



Scale 1 : 757

Position: (0.000 m, 5.000 m, 0.000 m)  
 Size: (20.000 m, 10.000 m)  
 Rotation: (0.0°, 0.0°, 0.0°)  
 Type: Normal, Grid: 13 x 7 Points  
 Belongs to the following sport arena: General Sport Area 1

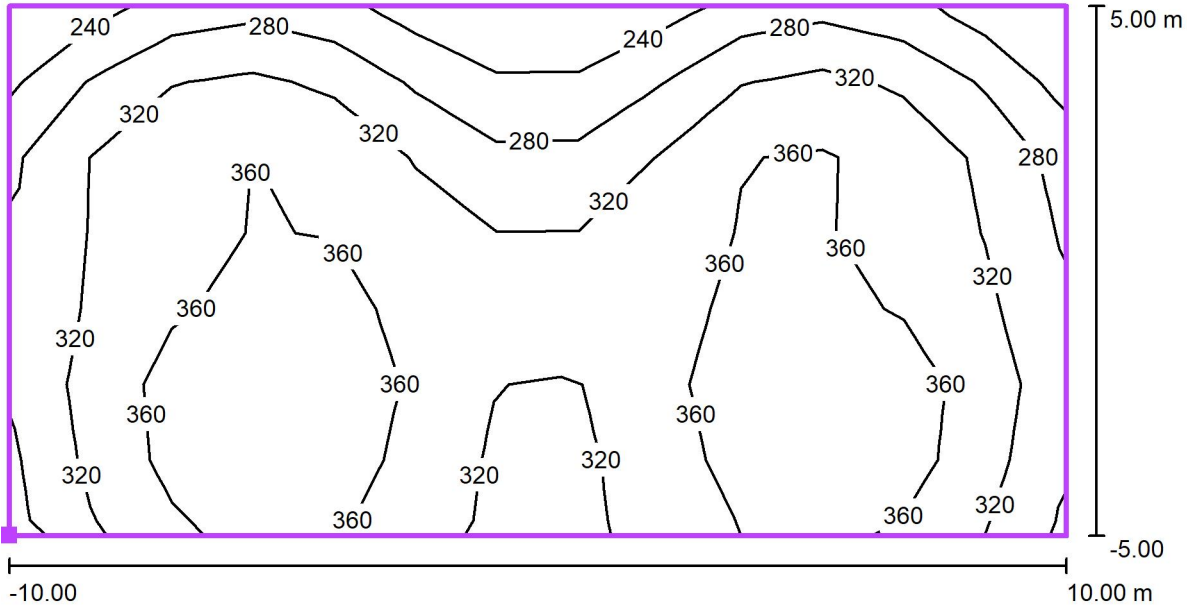
#### Results overview

No.	Type	$E_{av}$ [lx]	$E_{min}$ [lx]	$E_{max}$ [lx]	$u0$	$E_{min} / E_{max}$	$E_{h,m} / E_m$	H [m]	Camera
1	horizontal	331	217	414	0.66	0.52	/	0.000	/

$E_{h,m} / E_m$  = Relationship between middle horizontal and vertical illuminance, H = Measuring Height

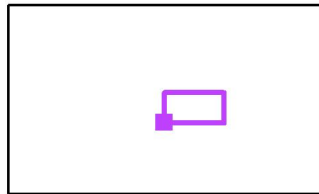
Operator  
 Telephone  
 Fax  
 e-Mail

**Exterior Scene 1 / General Sport Area 1 Calculation Grid (TA) / Isolines (E, Horizontal)**



Values in Lux, Scale 1 : 143

Position of surface in external scene:  
 Marked point: (-10.000 m, 0.000 m,  
 0.000 m)



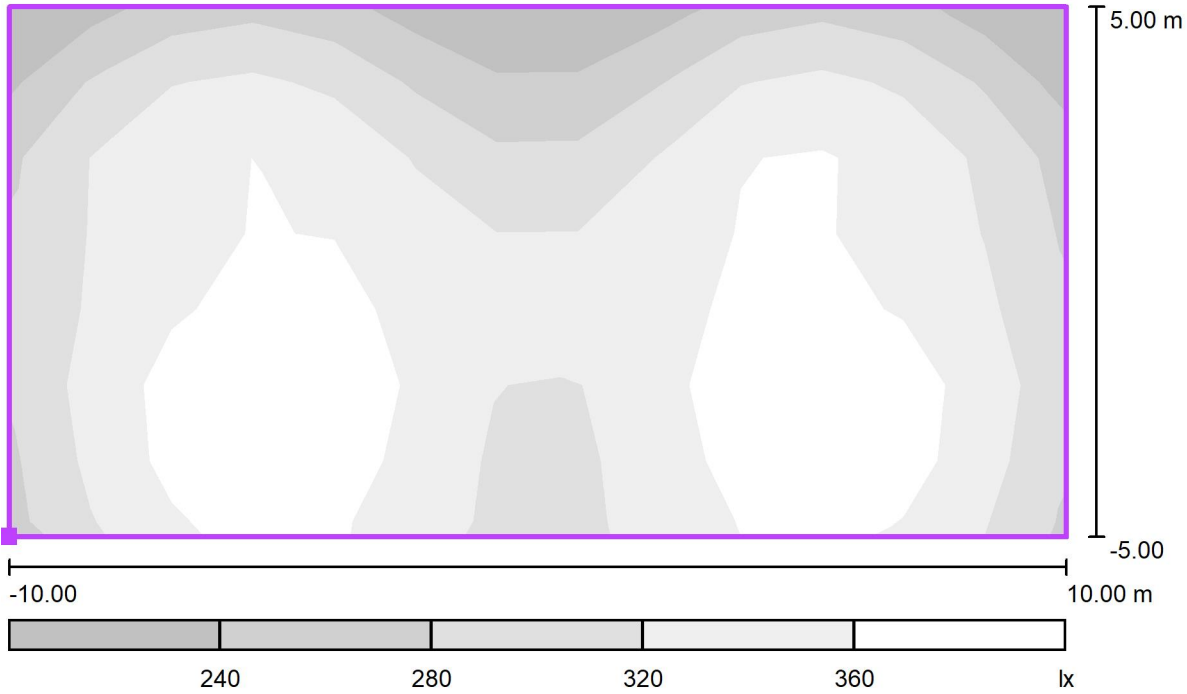
Grid: 13 x 7 Points

$E_{av}$ [lx]	$E_{min}$ [lx]	$E_{max}$ [lx]	$u0$	$E_{min} / E_{max}$
331	217	414	0.66	0.52



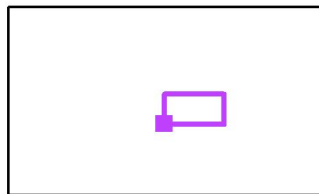
Operator  
Telephone  
Fax  
e-Mail

**Exterior Scene 1 / General Sport Area 1 Calculation Grid (TA) / Greyscale (E, Horizontal)**



Scale 1 : 143

Position of surface in external scene:  
Marked point: (-10.000 m, 0.000 m,  
0.000 m)

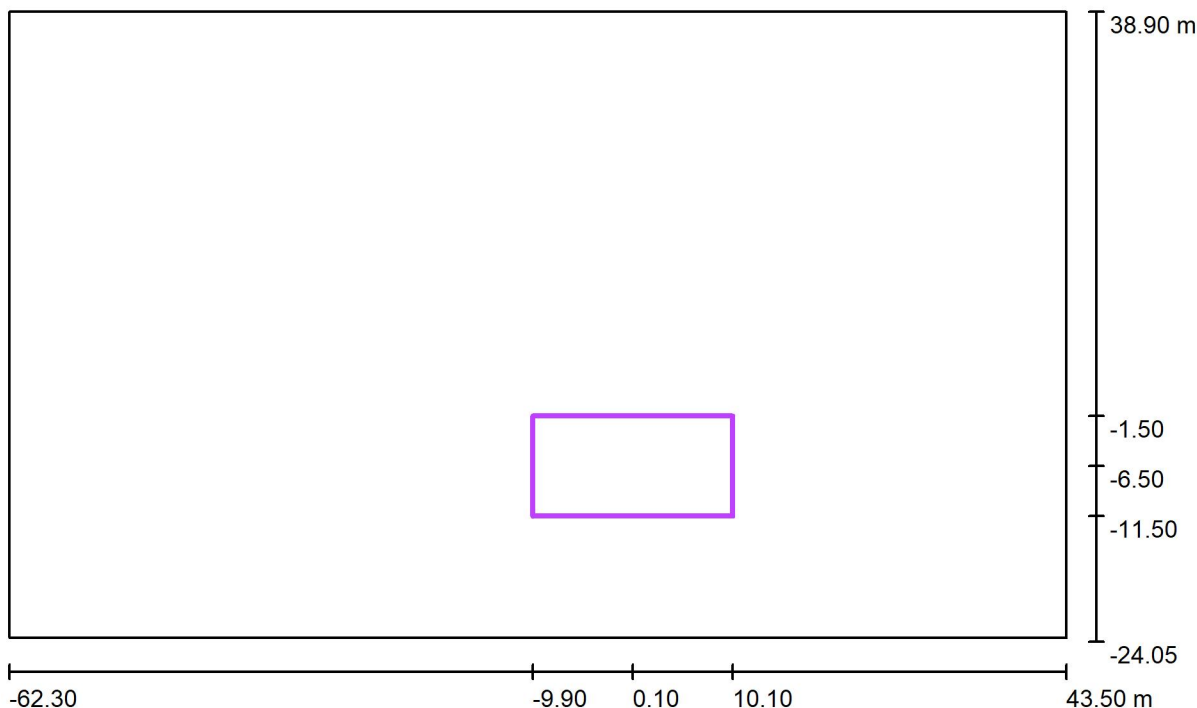


Grid: 13 x 7 Points

$E_{av}$ [lx]	$E_{min}$ [lx]	$E_{max}$ [lx]	u0	$E_{min} / E_{max}$
331	217	414	0.66	0.52

Operator  
Telephone  
Fax  
e-Mail

### Exterior Scene 1 / General Sport Area 1 Calculation Grid (TA) / Summary



Scale 1 : 757

Position: (0.100 m, -6.500 m, 0.000 m)  
 Size: (20.000 m, 10.000 m)  
 Rotation: (0.0°, 0.0°, 0.0°)  
 Type: Normal, Grid: 13 x 7 Points  
 Belongs to the following sport arena: General Sport Area 1

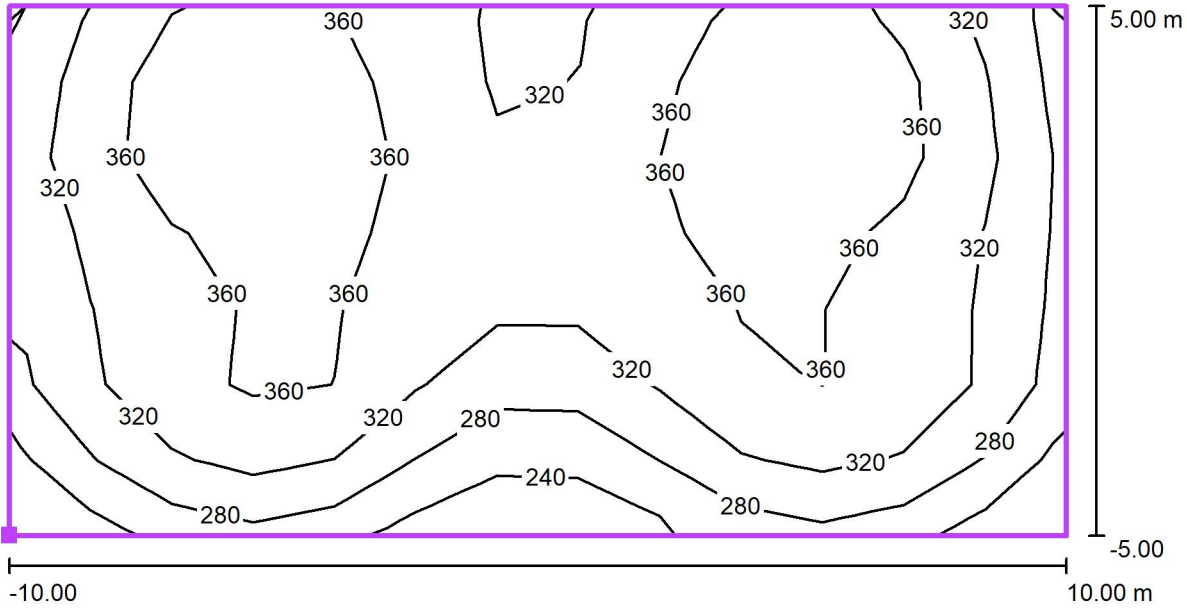
#### Results overview

No.	Type	$E_{av}$ [lx]	$E_{min}$ [lx]	$E_{max}$ [lx]	$u0$	$E_{min} / E_{max}$	$E_{h,m} / E_m$	H [m]	Camera
1	horizontal	332	222	414	0.67	0.54	/	0.000	/

$E_{h,m} / E_m$  = Relationship between middle horizontal and vertical illuminance, H = Measuring Height

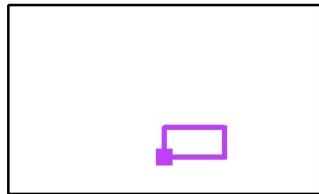
Operator  
 Telephone  
 Fax  
 e-Mail

**Exterior Scene 1 / General Sport Area 1 Calculation Grid (TA) / Isolines (E, Horizontal)**



Values in Lux, Scale 1 : 143

Position of surface in external scene:  
 Marked point: (-9.900 m, -11.500 m,  
 0.000 m)

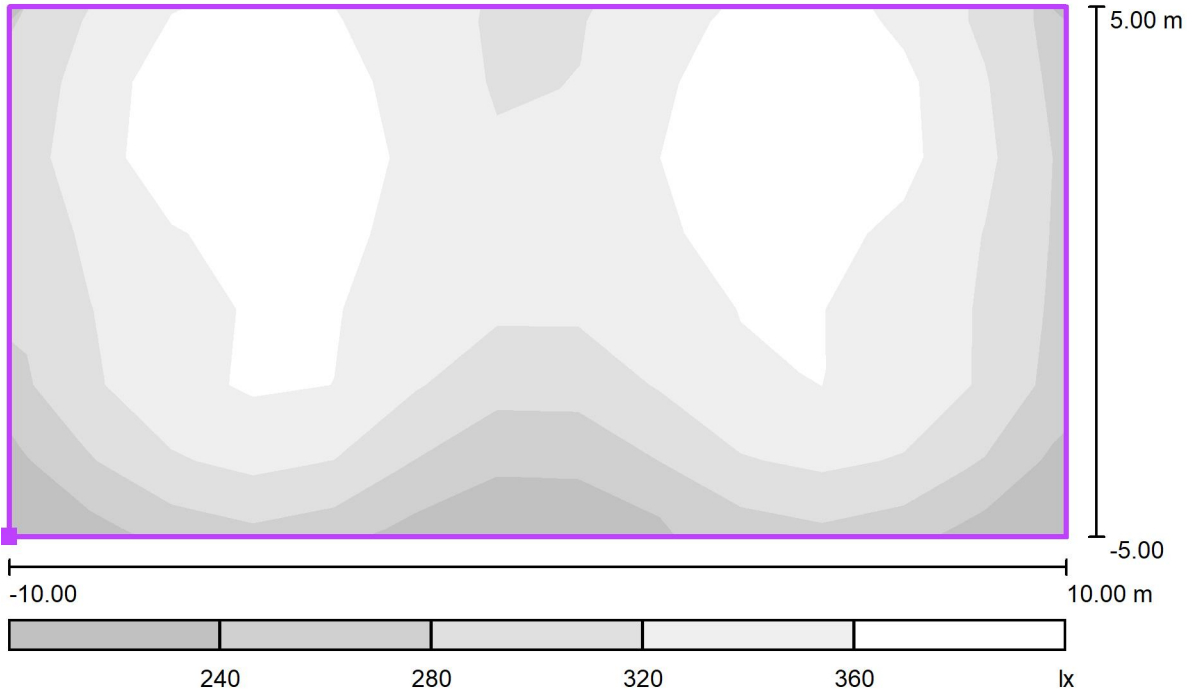


Grid: 13 x 7 Points

$E_{av}$ [lx]	$E_{min}$ [lx]	$E_{max}$ [lx]	$u0$	$E_{min} / E_{max}$
332	222	414	0.67	0.54

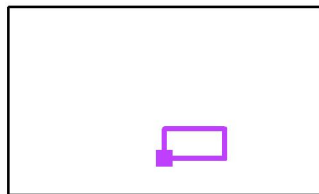
Operator  
 Telephone  
 Fax  
 e-Mail

**Exterior Scene 1 / General Sport Area 1 Calculation Grid (TA) / Greyscale (E, Horizontal)**



Scale 1 : 143

Position of surface in external scene:  
 Marked point: (-9.900 m, -11.500 m,  
 0.000 m)

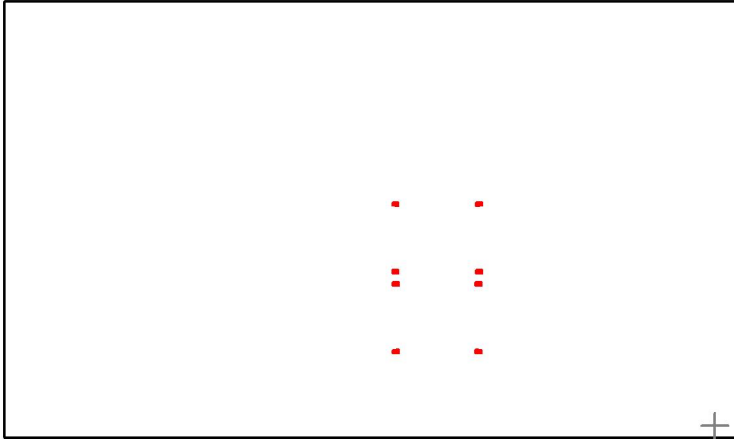


Grid: 13 x 7 Points

$E_{av}$ [lx]	$E_{min}$ [lx]	$E_{max}$ [lx]	u0	$E_{min} / E_{max}$
332	222	414	0.67	0.54

Operator  
 Telephone  
 Fax  
 e-Mail

### Exterior Scene 1 / Ved stadion kantine / Summary



Position: (39.900 m, -22.000 m, 1.700 m)

#### Possible interference sources

No.	Luminaire	Position [m]			Luminous emittance	Luminous intensity [cd]
		X	Y	Z		
1	LED HIGH MAST HM150NE1G-CM TP3	-5.832	0.161	6.000	Luminous emittance 1	68
2	LED HIGH MAST HM150NE1G-CM TP3	5.832	0.161	6.000	Luminous emittance 1	65
3	LED HIGH MAST HM150NE1G-CM TP3	-5.832	9.840	6.000	Luminous emittance 1	110
4	LED HIGH MAST HM150NE1G-CM TP3	5.832	9.840	6.000	Luminous emittance 1	120
5	LED HIGH MAST HM150NE1G-CM TP4	-6.237	0.153	6.000	Luminous emittance 1	61
6	LED HIGH MAST HM150NE1G-CM TP4	6.237	0.153	6.000	Luminous emittance 1	62
7	LED HIGH MAST HM150NE1G-CM TP4	-6.237	9.848	6.000	Luminous emittance 1	104
8	LED HIGH MAST HM150NE1G-CM TP4	6.237	9.848	6.000	Luminous emittance 1	122
9	LED HIGH MAST HM150NE1G-CM TP4	-6.198	-11.356	6.000	Luminous emittance 1	67
10	LED HIGH MAST HM150NE1G-CM TP4	6.198	-11.356	6.000	Luminous emittance 1	71
11	LED HIGH MAST HM150NE1G-CM TP4	-6.198	-1.644	6.000	Luminous emittance 1	95
12	LED HIGH MAST HM150NE1G-CM TP4	6.198	-1.644	6.000	Luminous emittance 1	113
13	LED HIGH MAST HM150NE1G-CM TP3	-5.724	-11.354	6.000	Luminous emittance 1	83
14	LED HIGH MAST HM150NE1G-CM TP3	5.724	-11.354	6.000	Luminous emittance 1	87
15	LED HIGH MAST HM150NE1G-CM TP3	-5.724	-1.646	6.000	Luminous emittance 1	109

Operator  
Telephone  
Fax  
e-Mail

## Exterior Scene 1 / Ved stadion kantine / Summary

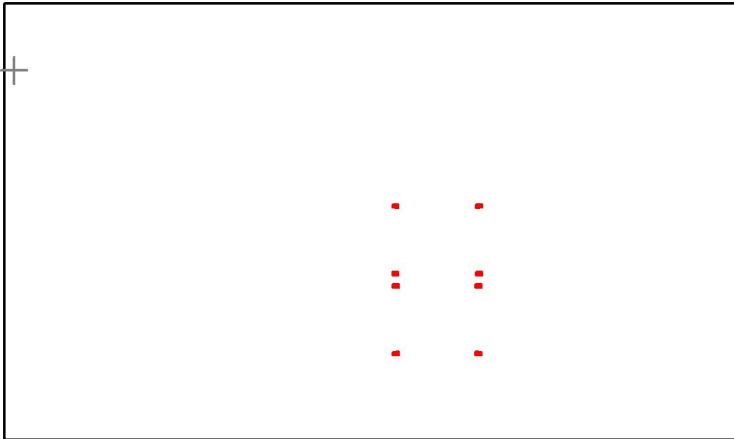
### Possible interference sources

No.	Luminaire	Position [m]			Luminous emittance	Luminous intensity [cd]
		X	Y	Z		
16	LED HIGH MAST HM150NE1G-CM TP3	5.724	-1.646	6.000	Luminous emittance 1	123

All luminaires placed in the exterior scene are listed.

Operator  
 Telephone  
 Fax  
 e-Mail

**Exterior Scene 1 / Kalekovænget 32 / Summary**



Position: (-60.900 m, 29.300 m, 1.700 m)

**Possible interference sources**

No.	Luminaire	Position [m]			Luminous emittance	Luminous intensity [cd]
		X	Y	Z		
1	LED HIGH MAST HM150NE1G-CM TP3	-5.832	0.161	6.000	Luminous emittance 1	103
2	LED HIGH MAST HM150NE1G-CM TP3	5.832	0.161	6.000	Luminous emittance 1	97
3	LED HIGH MAST HM150NE1G-CM TP3	-5.832	9.840	6.000	Luminous emittance 1	72
4	LED HIGH MAST HM150NE1G-CM TP3	5.832	9.840	6.000	Luminous emittance 1	72
5	LED HIGH MAST HM150NE1G-CM TP4	-6.237	0.153	6.000	Luminous emittance 1	96
6	LED HIGH MAST HM150NE1G-CM TP4	6.237	0.153	6.000	Luminous emittance 1	87
7	LED HIGH MAST HM150NE1G-CM TP4	-6.237	9.848	6.000	Luminous emittance 1	62
8	LED HIGH MAST HM150NE1G-CM TP4	6.237	9.848	6.000	Luminous emittance 1	60
9	LED HIGH MAST HM150NE1G-CM TP4	-6.198	-11.356	6.000	Luminous emittance 1	98
10	LED HIGH MAST HM150NE1G-CM TP4	6.198	-11.356	6.000	Luminous emittance 1	90
11	LED HIGH MAST HM150NE1G-CM TP4	-6.198	-1.644	6.000	Luminous emittance 1	59
12	LED HIGH MAST HM150NE1G-CM TP4	6.198	-1.644	6.000	Luminous emittance 1	58
13	LED HIGH MAST HM150NE1G-CM TP3	-5.724	-11.354	6.000	Luminous emittance 1	106
14	LED HIGH MAST HM150NE1G-CM TP3	5.724	-11.354	6.000	Luminous emittance 1	100
15	LED HIGH MAST HM150NE1G-CM TP3	-5.724	-1.646	6.000	Luminous emittance 1	62

Operator  
Telephone  
Fax  
e-Mail

## Exterior Scene 1 / Kalekovænget 32 / Summary

### Possible interference sources

No.	Luminaire	Position [m]			Luminous emittance	Luminous intensity [cd]
		X	Y	Z		
16	LED HIGH MAST HM150NE1G-CM TP3	5.724	-1.646	6.000	Luminous emittance 1	63

All luminaires placed in the exterior scene are listed.